



METHODIST  
DEPARTMENT  
of  
CHILD CARE



**Babies' Home**  
and  
**"Orana"**

*Annual Report, 1961*

# METHODIST DEPARTMENT OF CHILD CARE

TEMPLE COURT  
422 COLLINS STREET, MELBOURNE  
PHONE: 67-5472



*President of the Council:* Rev. C. K. DAWS

*General Superintendent:* Rev. Dr. J. K. W. MATHIESON

*Administrative Officer:* Mr. R. G. FAIRHALL



Methodist Babies' Home  
12 Copelen Street  
SOUTH YARRA  
Phone: 24-2614

*President:* Mr. G. PADGHAM, J.P.

"Orana"  
Methodist Peace Memorial Homes for Children  
87 Elgar Road  
BURWOOD, E.13  
Phone: 28-1217

*President:* Mrs. T. C. RENTOUL



# METHODIST DEPARTMENT OF CHILD CARE

## *Annual Report*

---

### THE DEPARTMENT

The Methodist Babies' Home and "Orana" Methodist Peace Memorial Homes for Children were united in the Methodist Department of Child Care by resolution of the 1959 Conference. The intervening two years have been marked by increased understanding and co-ordination of activities between these two Homes within the framework of the new Department.

### RELATION TO VICTORIAN CHILD CARE

Close contact has been maintained with the appropriate State Departments and with the Children's Welfare Advisory Council, as also with the Councils and working committees of the major Associations concerned with Child Welfare.

### METHODIST CHILDREN AT "TURANA" AND "WINLATON"

Last year's pilot project has been followed up. A student from Queen's College, at present resident at "Orana", has undertaken the pastoral oversight of the girls at "Winlato". The situation at "Turana" has been kept under observation, but by mutual agreement, our work there has been held back pending clarification of organization under the Social Welfare Act of 1960.

### SPASTIC AND MENTALLY RETARDED CHILDREN

The request from Conference, 1960, issued in a survey, replies to which indicated that in forty-two per cent. of the circuits in Victoria there were in Methodist families 23 spastic children and 65 mentally retarded children. Of these only two spastic children and eight mentally retarded children were listed as children for whom the church might consider it desirable to make special provision.

The investigation showed that the needs of spastic children were being met almost completely already, and that the Mental Hygiene Authority's programme for mentally retarded children has wide and increasing coverage. The recommendations which arise from this report themselves, are evidence of the willing co-operation of the Authority.

## INDIVIDUAL AND FAMILY CASEWORK

The need for improved individual and family casework has prompted the Council to set up a committee to consider the extent to which the work of the Department eventually may require the employment of professionally trained social workers. This matter is still under review.

## DEPUTATION AND THE CIRCUITS

With the appointment of the Administrative Officer, Mr. R. G. Fairhall, it has become possible to increase the amount of deputation work particularly in country areas. Moreover new forms of deputation have been arranged, notably in direct visits to circuit officials to explain the policy and responsibilities and needs of the Department and in participation in panel visits often on an inter-church basis. We appreciate the willing co-operation of our ministers and circuit officials.

## FINANCE

In 1958, Conference suggested to circuits that support for the combined work of Babies' and Children's Homes should be at the level of 10/- per member per year. Although since then the work of the Department has increased and the purchasing value of money has decreased, comparatively few circuits have reached even the 10/- and the average throughout the Conference is only 6/6.

As a result both Babies' Home and "Orana" have needed to meet deficits from bequests which fortunately have remained more than adequate for the purpose.

It is noted that although the Babies' Home and "Orana" are Methodist Homes, the total contribution from the Church stands at £14,865 compared with £26,730 from Government sources (including a 10% increase this year in the grant from the Hospitals and Charities Commission).

## SUMMARY OF FINANCES

During the year ended 30/6/1961 we received:—

*From:—*

|   |         |
|---|---------|
| Churches and Church Bodies - - - - -  | £13,779 |
| Subscriptions and Donations from Industry, Commerce and Individuals - - - - - | 4,978   |
| Button Days, Special Functions, etc. - - - - -                                | 2,329   |
|   | <hr/>   |
|   | £21,086 |

*During the year we spent:—*

|  |         |
|--|---------|
| Salaries, etc. - - - - -   | £4,292  |
| Advertising, Printing, Stationery, Office Expenses and Miscellaneous - - - - - | 1,290   |
| Distribution—Methodist Babies' Home - - - - -                                  | 6,043   |
| Distribution—Methodist Homes for Children - - - - -                            | 9,461   |
|  | <hr/>   |
|  | £21,086 |



## THE METHODIST BABIES' HOME

### *Thirty-Second Annual Report, 1961*

---

#### THE CHILDREN

The Home continues its work of receiving babies for adoption or temporary care. Each child admitted is in genuine need and dependent on the Church for its life and upbringing. Admittance to the Home, where they receive the best of medical attention, scientific diet, love and affectionate care from the skilled staff of nurses is often a most important deciding factor in his, or her, future. During the past year there have been 94 admissions, 84 adoptions and at present there are 31 children in the Home. During the 31 years the Home has been in operation 2,120 babies have been admitted into care and 1,558 have been adopted.

#### ADOPTIONS

The year has brought several problems. In one case an adoption arranged by the Home, but not yet legalised, was challenged in the Supreme Court. The judge's decision in favour of the Babies' Home encourages further confidence in our Adoption policy, a policy which includes home visits and reports by the Confidential Officer thereby providing invaluable guidance in placing babies.

As a result of an increased number of boys becoming available for adoption, the waiting time for the present has been reduced to approximately three months; however the waiting time for receiving a girl still is considerably longer. The number of applicants still far exceeds the number of babies available.

In conjunction with the Department, the Babies' Home has made a significant contribution to the discussions concerning improved adoption legislation.



★ *Entrance to the Methodist Babies' Home*

## STAFF

The honorary medical staff, the staff at the Home under the Matron, Miss Grant, the Confidential Officer and her assistant have given devoted and untiring service.

## MOTHCRAFT TRAINEES

During the past year 15 trainees completed the course, thus bringing the number trained by the Home to 466. Young women of 17 years of age or over who:—

- hold the proficiency certificate or its equivalent,
- enjoy good health and possess good eye-sight,
- could be patient with babies and pre-school children,
- would like to do the 15 months Mothercraft Nursing course,

are invited to write to the Matron for further particulars regarding this course which leads to registration with the Victorian Nursing Council as a Registered Mothercraft Nurse.

## BIRTHDAY CELEBRATION

The birthday, held on the first Sunday in December, continues to attract a large number of people including an increasing attendance of senior Sunday School scholars and members of Youth Fellowships.

## BUILDINGS AND GROUNDS

The maintenance of our property is constantly under review. Painting of the main buildings—both internally and externally—has largely been completed.

Attention has also been given to the grounds surrounding the Home. An extensive improvement programme included the planting of approximately 60 new trees and shrubs together with the regrading and replanting of the lawns. This should greatly enhance the appearance of the property.



★ *All are precious in HIS sight*



## SUMMARY OF FINANCES

During the year ended 30/6/1961 we received:—

*From:—*

|  |         |
|--|---------|
| Child Welfare Department - - - - -           | £2,636  |
| Hospitals and Charities Commission - - - - - | 4,400   |
| Commonwealth Child Endowment - - - - -       | 638     |
| Mothercraft Tuition Grant - - - - -          | 1,000   |
| Pre-School Grant - - - - -                   | 325     |
| Investments—Trust Estates, etc. - - - - -    | 6,880   |
| Methodist Department of Child Care - - - - - | 6,043   |
|  | £21,922 |

*During the year we spent:—*

|  |         |
|--|---------|
| Salaries, Wages and Superannuation - - - - -                 | £14,481 |
| Provisions, Supplies, Medical Expenses, etc. - - - - -       | 4,966   |
| Repairs, Maintenance and Replacements, etc. - - - - -        | 609     |
| Insurances, Publicity, Rent and Office Expenditure - - - - - | 1,562   |
| Travelling Expenses - - - - -                                | 494     |
| Provision for Repairs and Replacements - - - - -             | 1,000   |
|  | £23,112 |
| We had a deficit of - - - - -                                | £1,190  |
| Which was met from bequests totalling - - - - -              | 3,555   |
|  | £2,365  |
| Capital funds increased by - - - - -                         | £2,365  |



★ *Family cottages at "Orana"*



“ORANA”  
METHODIST PEACE MEMORIAL HOMES FOR CHILDREN

*Seventy-Third Annual Report, 1961*

---

### POLICY

Until the Social Welfare Act is fully proclaimed and has been in operation for a period the effect of this new Act on “Orana” policy cannot be fully calculated.

It is clear that our provision for consultation and counselling for families with child care problems is becoming increasingly valuable. With the accepted principle that children are best cared for, where possible, in their own homes, or in adequate adoptive or foster homes, and with the high costs of institutional care, it becomes important that the only children receiving institutional care should be those for whom such care is essential.

Nevertheless the particular care which “Orana” is equipped to provide has remained necessary for a number of State wards and other children of mixed families, whilst short temporary care has been provided for some children of specifically Methodist families.

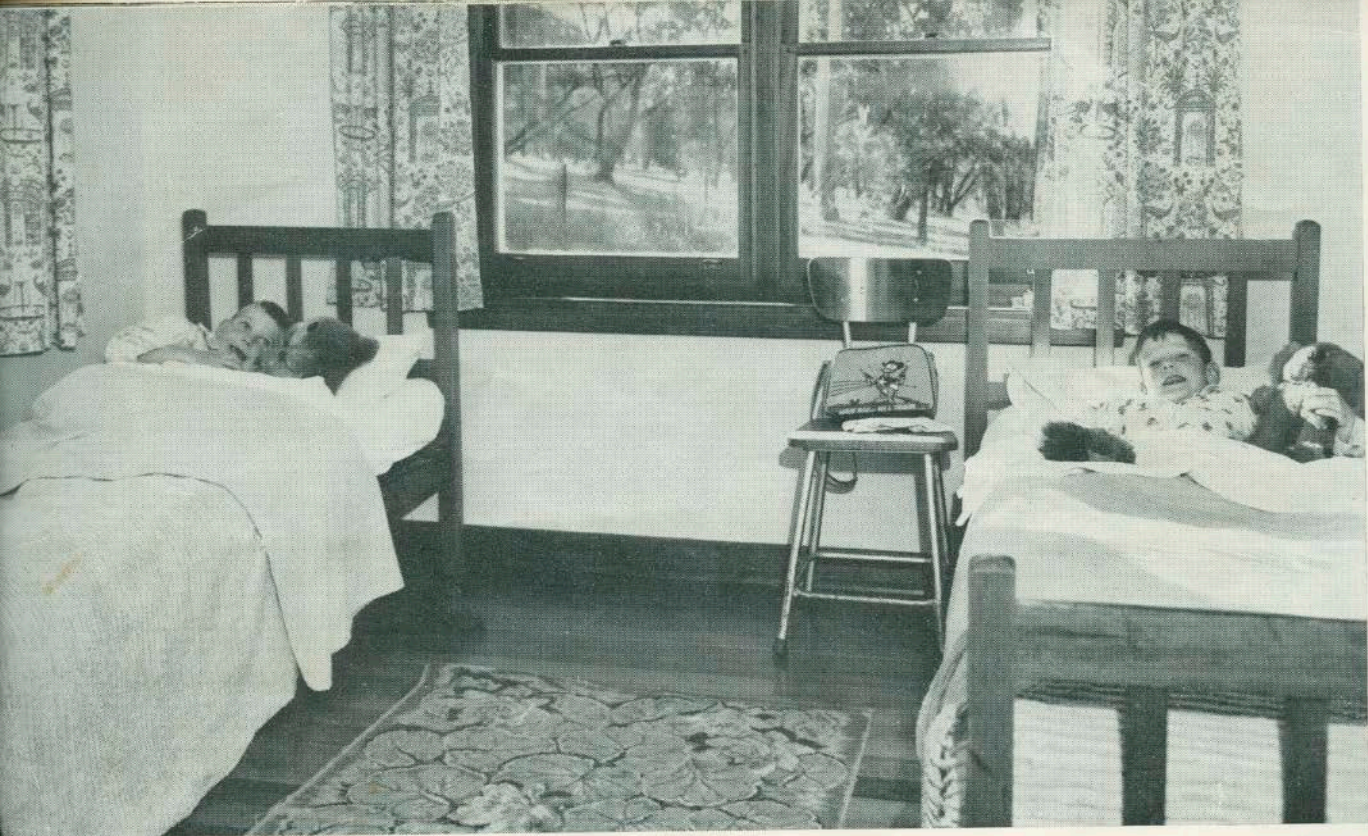
As more single “family” cottages are “scattered” through the community by other agencies, it seems likely that children reaching “Orana” may be those having a greater degree of disturbance and in consequence needing more specialised care.

### CHILDREN

At 30/6/61, 34 children were in care at “Orana” and several children were in foster care. The after care programme has occupied considerable staff time in following up the problems of children no longer in residence but still needing our help.

Amongst the children at present in care are three Croker Island children whose foster placements broke down, and also seven children who were accepted for short-term care.

Since the inception of the Methodist Homes for Children in 1888, the total number of children cared for in the Homes was 2,328, of whom 27 were admitted during the year.



★ . . . and so to bed

## STAFF

It is very pleasing to report that over the twelve months the interest, devotion and stability of the "Orana" staff have been at a very high level. In-service staff training continues in conjunction with the part-time course of the Victorian Council of Social Service. The full-time training to be set up under the Social Welfare Act has yet to be inaugurated.

A significant new appointment, already proving its value, is that of "Orana's" first professionally trained social worker, Miss M. Moore.

Particularly important to the work of "Orana", and greatly appreciated, is the help given by our honorary medical and professional consultants.

## BUILDINGS AND EQUIPMENT

"Orana" is fortunate in its debt-free and eminently appropriate buildings and equipment which do much to facilitate good child care. Although no further major building operations have been undertaken, considerable time and some expense have been involved in keeping the extensive property in thorough repair. The only additional building immediately contemplated is a small motel-type structure to house senior staff. This is expected to cost approximately £6,500, and of this amount £3,000 has been promised by the Hospitals and Charities Commission.

We note with gratitude, also, that special gifts have made possible the purchase of a Hammond Spinnet organ, an instrument very suited to the beautiful Peace Memorial Chapel.

## SPECIAL OCCASIONS

Despite most inclement weather, the Fair under the auspices of the Ladies' Committee realised a record sum of £2,510. On Remembrance Sunday, the official Remembrance Service was held in the Peace Memorial Chapel, and Memorial Windows to the R.A.N., A.I.F. and R.A.A.F. were unveiled. For the birthday, the Guest of Honour was the new Director-General of Social Welfare, Mr. A. R. Whatmore.

## SUMMARY OF FINANCES

During the year ended 30/6/1961 we received:—

*From:—*

|  |               |
|--|---------------|
| Child Welfare Department - - - - -           | £8,433        |
| Hospitals and Charities Commission - - - - - | 6,970         |
| Commonwealth Child Endowment - - - - -       | 1,592         |
| Pre-School Grant - - - - -                   | 325           |
| Department of Northern Territory - - - - -   | 411           |
| Private Payments for Children - - - - -      | 1,377         |
| Investments, Trust Estates, etc. - - - - -   | 5,754         |
| Ladies' Annual Fair - - - - -                | 2,510         |
| Methodist Department of Child Care - - - - - | 9,461         |
|  | <hr/> £36,833 |

*During the year we spent:—*

|  |               |
|--|---------------|
| Salaries, Wages and Superannuation - - - - -               | £24,090       |
| Provisions, Supplies, Medical Expenses, etc. - - - - -     | 12,626        |
| Repairs, Maintenance, Replacements, etc. - - - - -         | 1,870         |
| Office Expenditure, Insurances, Advertising etc. - - - - - | 2,595         |
| Travelling Expenses - - - - -                              | 746           |
| Depreciation and Provision for Replacements - - - - -      | 1,350         |
|  | <hr/> £43,277 |
| We had a deficit of - - - - -                              | £6,444        |
| Which was met from bequests totalling - - - - -            | 11,344        |
|  | <hr/>         |
| Capital funds increased by - - - - -                       | <u>£4,900</u> |

## THANKS

The service accorded to the Department and to the two Homes is very considerable indeed. A wide range of medical and other professional skills are made available in an honorary capacity and most valuable help is given by our numerous consultants and by the staffs of public hospitals and clinics and schools as well as by the local Church and Sunday School.

We appreciate, too, the valiant efforts of the great army of supporters—circuit secretaries and church agents, individuals and organizations helping in cash and in kind, holiday hosts, deputations—without whose interest and assistance the work of child care could not continue.

The Council, the Boards of Management, the various working committees and the staff, in their varied responsibilities have served with devotion and energy.

To all who have given such willing assistance, we express hearty thanks. With the challenge of ever widening horizons in child care the Department and the Boards of Management look to the future with confidence and with faith in the guidance of God in the care of the babies and children entrusted to the loving kindness of the Church.

On behalf of the Department and the Homes,

C. K. DAWS, *President of the Council*

J. K. W. MATHIESON, *General Superintendent*

## *LEGACIES*

The successful establishment of both the Babies' Home and "Orana" has been materially assisted by the legacies which have been received.

If possible will **YOU** please make provision in **YOUR WILL** for the work of the Department and its constituent Homes thereby helping to secure the future of babies and children in need.

If desired, legacies may be made for specific purposes including endowment; in the latter case legacies are funded and only the income is used.

---

## *GIFTS*

Only regular and increased support from individuals and from Church organizations will make it possible to maintain and improve the standards of the care available to the children entrusted to our Church.

\* \* \*

All gifts of £1 and over are allowable deductions for income tax purposes.